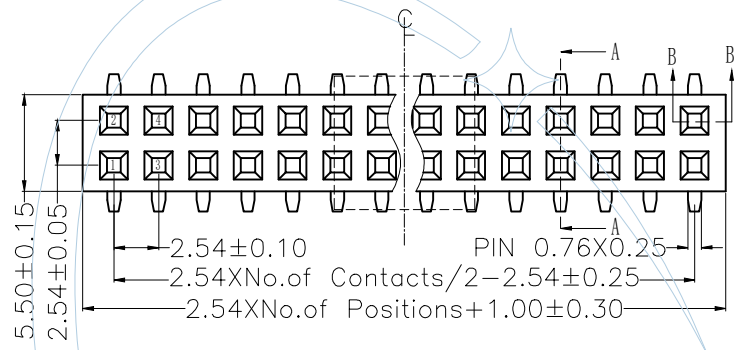
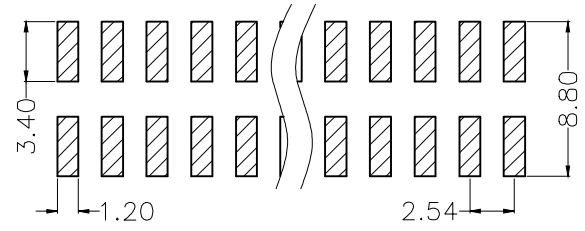




NOTES:
 Current Rating: 1.0AMP
 Withstand Voltage: 1000V AC/DC
 Contact Resistance: 20mΩ Max
 Insulation Resistance: 1000MΩ Min
 Operation Temperature: -40°C to +105°C

Contact Material: Phosphor Bronze or Brass
 Contact Plating: Au or Sn over Ni
 Insulator Material: PA6T/PA9T/LCP+30%G.F (UL94V-0)

Recommended P.C.B Layout (TOP Side)
 (PCB BOARD TOLERANCE ±0.05)



Ordering Information

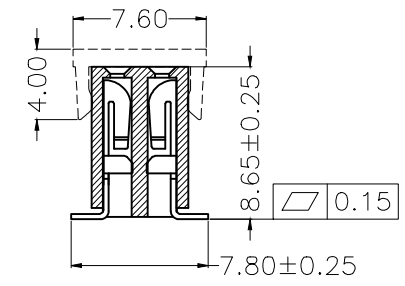
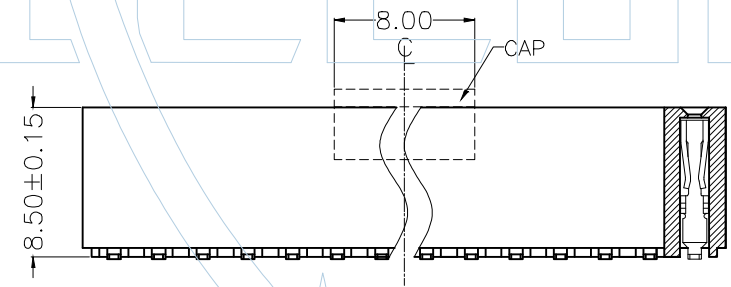
FHB185-2 XX M XX 6UN X 1

No. of Pins
02-40

Contact Plating:
 G0=Gold Flash
 G1=3u"Gold
 G2=5u"Gold
 G3=10u"Gold
 G4=15u"Gold
 G5=30u"Gold
 S0=Gold Flash/Tin
 S1=3u"Gold/Tin
 S2=5u"Gold/Tin
 S3=10u"Gold/Tin
 S4=15u"Gold/Tin
 S5=30u"Gold/Tin
 SW=Tin

6=PA6T
 9=PA9T

Packing
 T=Tube+Cap
 R=Tape&Reel+Cap



| ITEM | Pitch | Mating |
|-----------|-------|----------------------|
| Standard | 2.54 | PHA125/PHA120/PHA115 |
| Alternate | | |

| REV | DATE | MODIFICATION DESCRIPTION | CHANGE | APPROVE |
|-----|------|--------------------------|--------|---------|
| 1 | | | | |

| ENGINEERING | | DRAW | SCALE | FREE | PART NO. |
|-------------|-------|---------|-------|------|-------------------------------------|
| X.X | ±0.40 | | | | |
| X.XX | ±0.25 | CHECK | SIZE | A3 | TITLE: 2.54mm 排母 双排 SMT H=8.5 |
| X.XXX | ±0.15 | APPROVE | SHEET | 1/1 | Customer NO. |
| Angle | ± 3° | | PROJ. | | |
| DIM | TOL | | | | |

| | | |
|-------|------|-------------------------------------|
| SCALE | FREE | PART NO. |
| UNIT | mm | FHB185-2XXMX6UNX1 |
| SIZE | A3 | TITLE: 2.54mm 排母 双排 SMT H=8.5 |
| SHEET | 1/1 | Customer NO. |
| PROJ. | | |

YLCCON
 Dongguan YILI Electronic Technology Co., Ltd
 Tel:
 FAX:
 E-mail:
<http://www.ylcon.cn>