



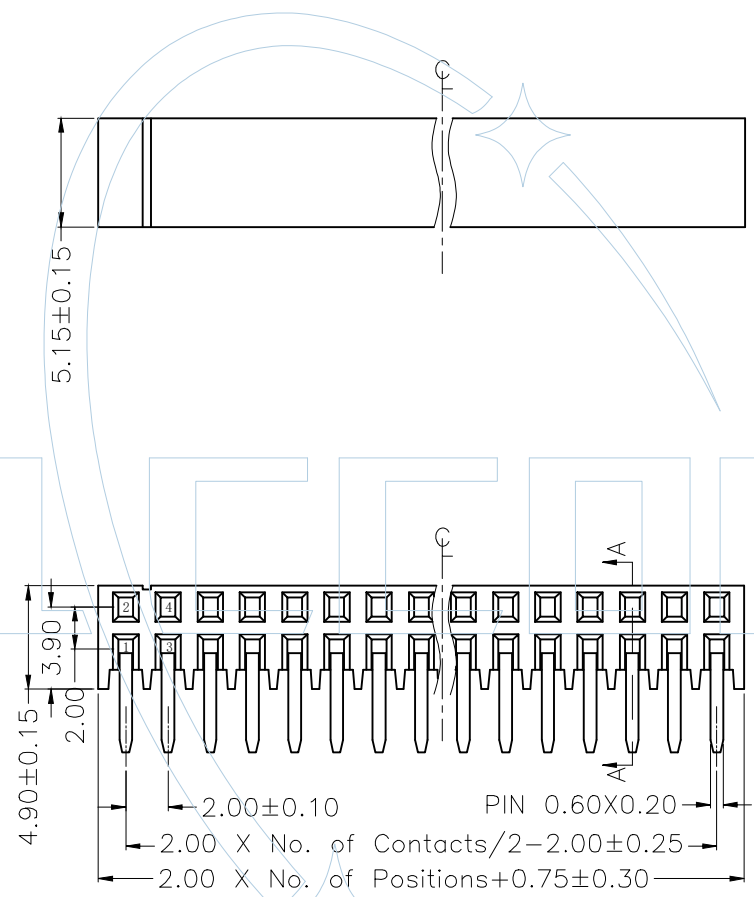
NOTES:
 Current Rating: 1.0AMP
 Withstand Voltage: 1000V AC/DC
 Contact Resistance: 20mΩ Max
 Insulation Resistance: 1000MΩ Min
 Operation Temperature: -40°C to +105°C

Contact Material: Phosphor Bronze or Brass
 Contact Plating: Au or Sn over Ni
 Insulator Material: PA6T/PA9T/LCP+30%G.F (UL94V-0)

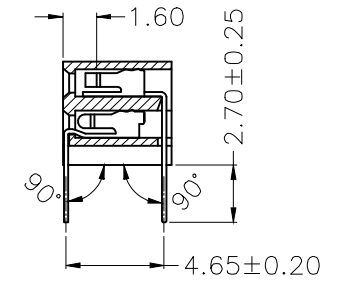
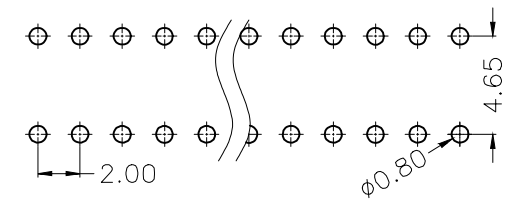
Ordering Information

FHB249-2 XX R XX 6UN X 1

- No. of Pins
02-40
- Contact Plating:
 G0=Gold Flash
 G1=3u"Gold
 G2=5u"Gold
 G3=10u"Gold
 G4=15u"Gold
 G5=30u"Gold
 S0=Gold Flash/Tin
 S1=3u"Gold/Tin
 S2=5u"Gold/Tin
 S3=10u"Gold/Tin
 S4=15u"Gold/Tin
 S5=30u"Gold/Tin
 SW=Tin
- 6=PA6T
 9=PA9T
- Packing
 T=Tube+Cap
 R=Tape&Reel+Cap



Recommended P.C.B Layout (TOP Side)
 (PCB BOARD TOLERANCE ±0.05)



ITEM	Pitch	Mating
Standard	2.0	PHA215/PHA220
Alternate		

				ENGINEERING		DRAW		SCALE	FREE	PART NO.	 Dongguan YILI Electronic Technology Co., Ltd Tel: FAX: E-mail: http:// www.ylccon.cn
				X.X	±0.40	DESIGN		UNIT	mm	TITLE:	
				X.XX	±0.25	CHECK		SIZE	A3	2.0mm 排母 双排侧插 90° H=4.9	
				X.XXX	±0.15	APPROVE		SHEET	1/1	Customer NO.	
REV	DATE	MODIFICATION DESCRIPTION		CHANGE	APPROVE			PROJ.			